



# GMT MONTHLY MEMBERSHIP PROGRESS REPORT

Results as of: 3/31/2026

Multiple District 27

LOCATION: WISCONSIN

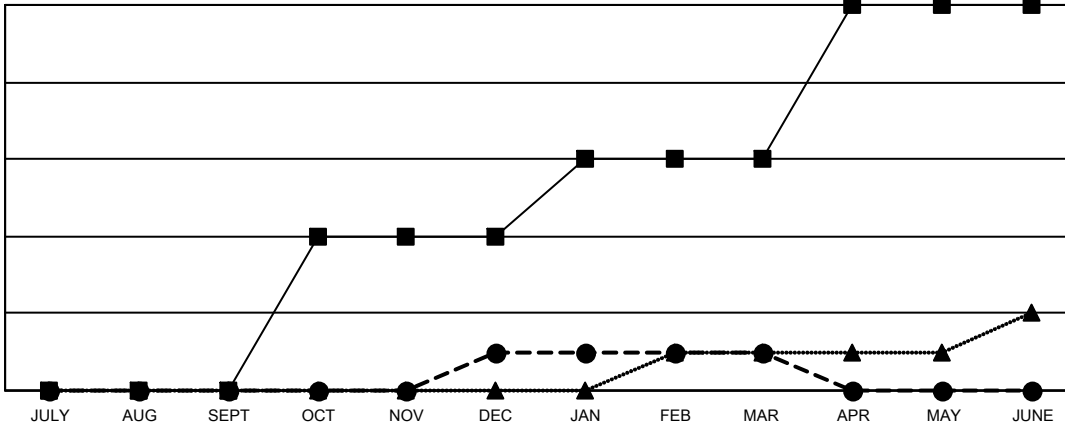
GMT: OPEN

GMT CA 1

Clubs			
RESULTS FOR 2025-2026			
QUARTER	NEW CLUB GOAL	NEW CLUBS	DROPPED CLUBS
JULY/AUG/SEPT	0	0	0
OCT/NOV/DEC	4	1	1
JAN/FEB/MAR	2	0	1
APR/MAY/JUNE	4	0	0

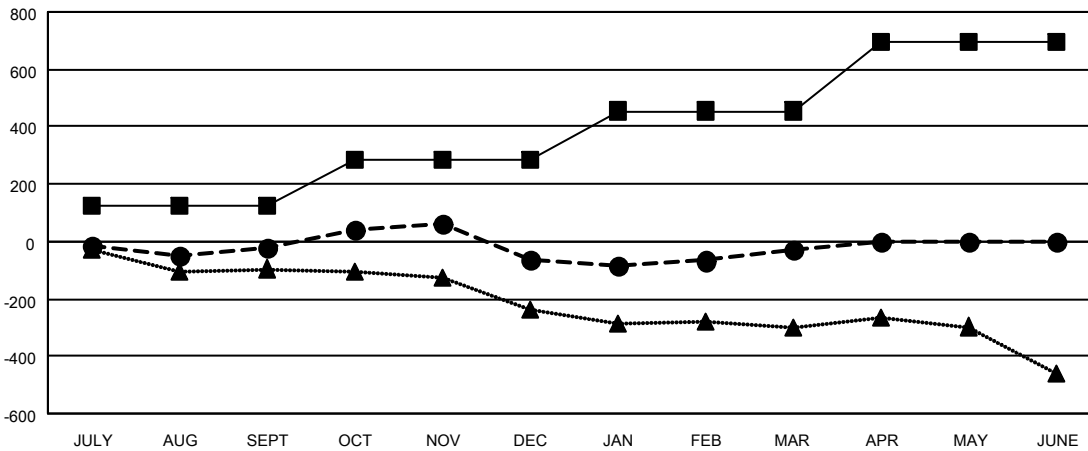
Members			
RESULTS FOR 2025-2026			
QUARTER	MEMBER GROWTH NET GOAL	MEMBER GROWTH ACTUAL	DROPPED MEMBERS ACTUAL (including transfers)
JULY/AUG/SEPT	126	403	361
OCT/NOV/DEC	159	387	403
JAN/FEB/MAR	170	400	333
APR/MAY/JUNE	242	0	0

GOALS AND ACTUAL NEW CLUBS CUMULATIVE



- - CURRENT YEAR GOALS FOR NEW CLUBS
- - CURRENT YEAR ACTUAL NEW CLUBS
- ▲ - LAST YEAR ACTUAL NEW CLUBS

GOALS AND ACTUAL MEMBERS CUMULATIVE



- - MEMBER GROWTH NET GOAL
- - MEMBER GROWTH ACTUAL
- ▲ - LAST YEAR MEMBERSHIP ACTUAL

DROPPED CLUBS: 2	
<b>DROPPED MEMBERS</b>	
DECEASED	170
CLUB CANCELLED	11
OTHER	916
<b>TOTAL</b>	<b>1,097</b>

317 CLUBS OF 502 ADDED 1 OR MORE NEW MEMBERS

GENDER DISTRIBUTION	
MALE	11,360 (69.13%)
FEMALE	5,072 (30.87%)

[CLICK HERE FOR CUMULATIVE MEMBERSHIP DATA](#)

TOTAL FAMILY UNIT MEMBERS	3,583
FAMILY MEMBERS PAYING HALF DUES	1,819